

# **POPULATION AND DEMOGRAPHIC PROFILE**

## **Population Count, Land Area, and Population Density**

### **Key Points**

#### **Regional Health Authority (RHA) # 5**

- **Population decreased 6.6% from 1991 to 1996, with the total population of SUNRISE HEALTH REGION in 2000 at 60,383 with approximately 71% living in cities towns or villages. <sup>2</sup>**
- **Visible minorities other than aboriginal account for less than 1% of the population. 5.26% of the population is of aboriginal descent, compared with similar regions this accounts for the third highest percentage.**
- **English is the mother tongue for 89% of residents in SUNRISE HEALTH REGION.**
- **The population density in SUNRISE HEALTH REGION is similar to Saskatchewan, with both being slightly less than the Canadian rate.**

#### **East Central Health District<sup>3</sup>**

- **The districts overall population decreased 4.1% from 1991 to 1999, although ten communities did show an increase in population, most notable is the City of Yorkton with an increase of 11.7%.**
- **English is the predominant language, considered the Mother Tongue by 82.6% of the population in ECHD.**
- **The aboriginal population is 4.7%, while visible minorities are 1% of the population.**

#### **North Valley Health District<sup>4</sup>**

- **The total population in this district decreased by 8.9% from 1991 to 1996, with one increase of 5.6% in Bangor and decreases up to 17.3% as in Duff.**

- **Visible minorities in the district account for less than 1% of the population, and the aboriginal population is 2.2%.**
- **English is the mother tongue of 77% of the population.**

**Assiniboine Valley Health District<sup>4</sup>**

- **The population in 1996 was 16,071, which is a decrease of 7.8% from the 1991 census, with decreases of up to 28% in Verigin, to a 55.2% increase in the Keeseekoose Band (change from 317 - 492).**
- **English is the mother tongue of 71% of the population.**
- **Just less than 1% of the population is a visible minority and the aboriginal population is 9.1%.**

Population counts, land area, and population density for Canada, province, and census divisions.<sup>5</sup>

\*The addition of Division numbers' five and nine encompasses the districts of Assiniboine Valley, East Central, and North Valley and beyond, therefore these figures do not represent only SUNRISE HEALTH REGION.

<b>Name</b>	<b>Population</b>	<b>Land area in square kilometres</b>	<b>Population density per square kilometer</b>
<b>Canada</b>	30,007,094	9,012,112.20	3.3
<b>Saskatchewan</b>	978,933	586,561.35	1.7
<b>Division No. 5</b>	32,492	14,756.14	2.2
<b>Division No. 9</b>	36,895	15,271.11	2.4

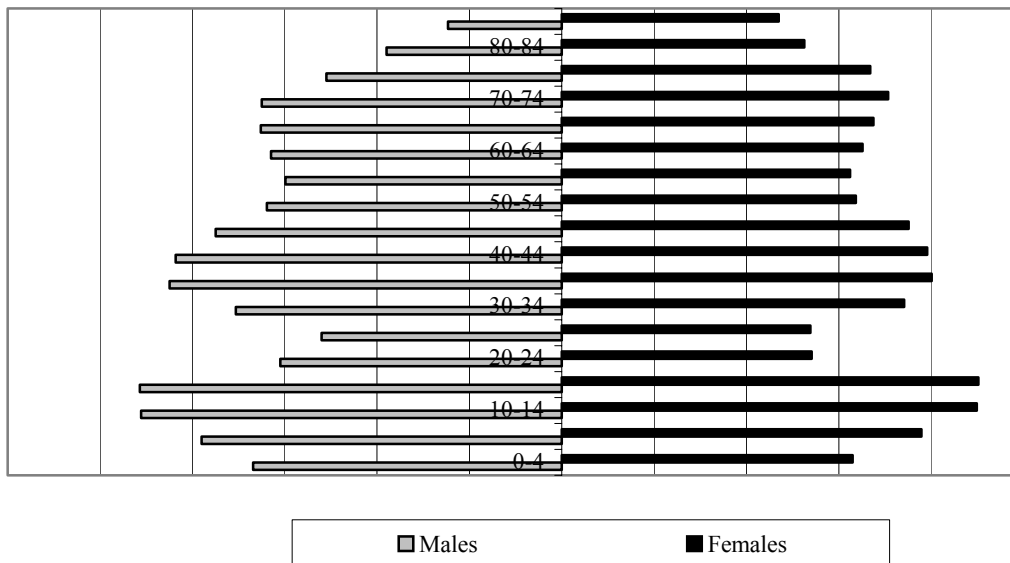
## Population Pyramid

### Key Points

In SUNRISE HEALTH REGION, 26.8% of the population are under 19 years of age and 25.3% are over 60 years of age. There are slightly more females (51%) in the region than males (49%), particularly after the age of 55, probably attributed to the longer average life expectancy of females. The decrease in the 20 to 24 and 25 to 29 age groups for both SUNRISE HEALTH REGION and Saskatchewan is quite apparent, particularly when compared to the Canadian pyramid. This is congruent with rural and small town areas in general, where an exodus of this age group to urban areas has occurred, with Saskatchewan being one of the three highest provinces showing this occurrence.<sup>6</sup>

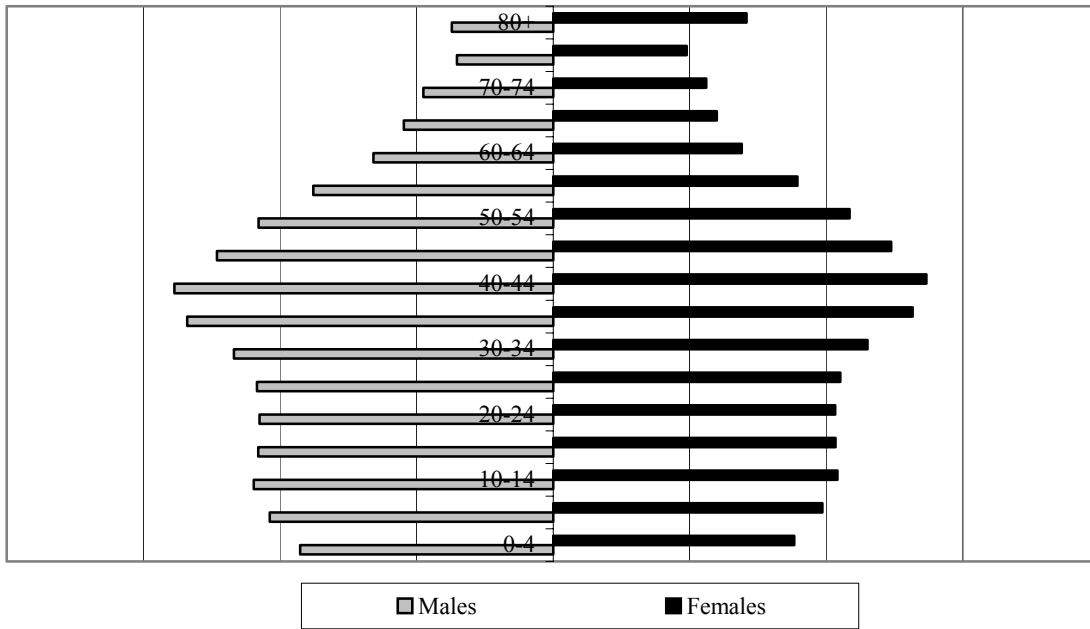
Population pyramid for SUNRISE HEALTH REGION.<sup>4</sup>

RHA # 5 Population Pyramid



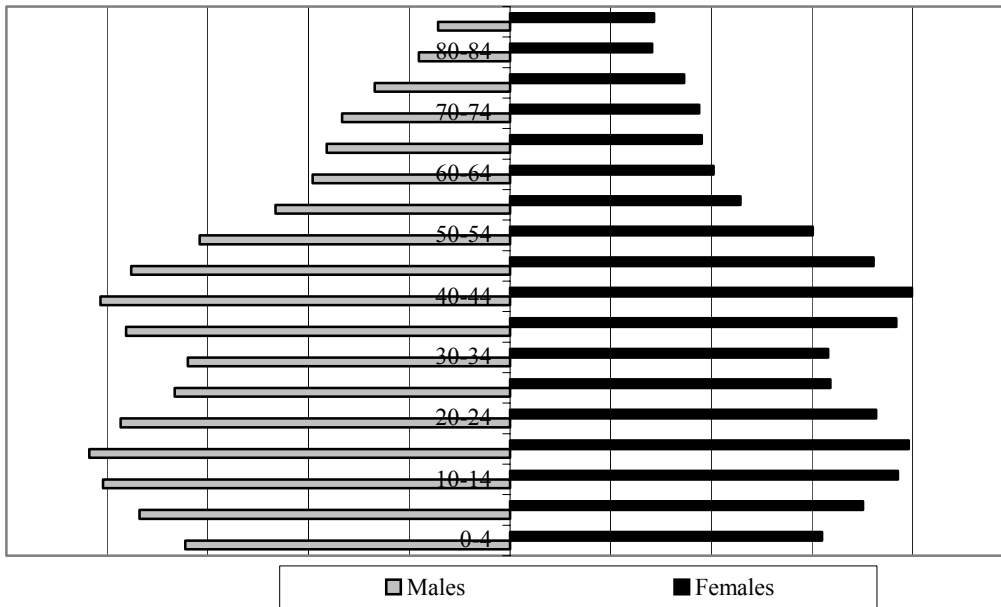
Population pyramid for Canada.<sup>7</sup>

### Canadian Population Pyramid



Population pyramid for Saskatchewan.<sup>8</sup>

### Population Pyramid of Saskatchewan



## Aboriginal population

### Key Points

The aboriginal population, as a proportion of total population of Saskatchewan is 11%.<sup>9</sup> The rates are different for the individual health districts that make up SUNRISE HEALTH REGION, as well as for the health authority when compared to Saskatchewan.<sup>4</sup> In SUNRISE HEALTH REGION, 5.26% of the population is of aboriginal descent, compared with similar regions this accounts for the third highest percentage.<sup>10</sup> There are differences in the ratio of North American Indian and Métis between the health districts, with higher numbers of métis in East Central and North Valley districts, than in Assiniboine Valley health district. The total aboriginal population is different between districts, ranging from 2.2% in North Valley to 9.1% in Assiniboine Valley. Health status characteristics and non-medical determinants of Aboriginal people differ from the non-Aboriginal population, so knowing the proportion of Aboriginal people in a geographic area provides context to better interpret health indicators.<sup>11</sup>

### Aboriginal Population Demographics.<sup>4</sup>

Characteristics	SUNRISE HEALTH REGION	Assiniboine Valley	East Central	North Valley
<b>Total population</b>	59,357.25	15766	29,358	14,233
<b>Total Aboriginal population</b>	3,122.10	1432	1,372	318
<b>North American Indian</b>	2,146.80	1332	743	72
<b>Métis</b>	935.00	90	619	226
<b>Other Aboriginal</b>	20.00	10	10	0
<b>Total non-Aboriginal population</b>	56,193.60	14329	27,977	13,887
<b>Aboriginal as% of total</b>	<b>5.26</b>	<b>9.1</b>	<b>4.7</b>	<b>2.2</b>

\* Aboriginal people are those persons who reported identifying with at least one Aboriginal group (e.g. North American Indian, Métis or Inuit) and/or those who reported being a Treaty Indian or a Registered Indian as defined by the Indian Act and/or those who were members of an Indian Band or First Nation.

\* Aboriginal population excludes institutional residents.

## Comparison With Similar Regions

### **Key Points**

**A key component of this Health Status Report is an attempt, where possible, to compare our health status with the health status of “similar” health regions. Whenever we talk about an indicator or rate, it is usually useful to compare it to another health region. This helps us assess how well or poorly we are doing, as well as alerting us to any possible causes for this difference. When comparing, however, it is generally important to compare “like with like”. Although no two health regions can be exactly the same, an attempt has been made by Health Canada to group similar Health Regions into “peer groups”. This is done on the basis of various socio-demographic variables. SUNRISE HEALTH REGION is in peer group E (bolded in the table in the following pages), whose distinguishing characteristics are a primarily rural population, a high percentage of people over the age of 65, a low percent of visible minorities, and with a lower average income.**

Regions included in peer group E.<sup>10</sup>

#### **Peer Group E**

1102 - Rural Health Region  
1201 - Zone 1  
1202 - Zone 2  
3545 - Muskoka-Parry Sound Public Health Unit  
3563 - Timiskaming Public Health Unit  
4650 - Marquette  
4655 - South Westman  
4660 - Parkland  
4702 - Moose Jaw Service Area  
4705 - Yorkton Service Area  
4708 - Melfort Service Area  
4709 - Prince Albert Service Area  
4710 - North Battleford Service Area

Estimates of socio-demographic characteristics and relative rankings of these characteristics with similar regions.<sup>10</sup>

Rank	Aboriginal:		Visible minority		Unemployment		1996 Population		Population ≥ 65		Income inequality	
	Peer	%	Peer	%	Peer	%	Peer	'000	Peer	%	Peer	%
1	C	75.5	A	32	D	27.7	I	6,973	E	16.5	J	24.4
2	F	17.2	B	20.2	C	17.2	H	6,883	A	13.6	F	23.6
3	E	7.5	J	5.7	F	11.4	A	5,159	I	13.5	G	23.5
4	G	6.8	I	4.5	A	11.3	B	4,887	G	12.9	B	23.2
5	I	2.5	F	3.5	H	11.2	J	1,739	D	12.1	I	22.9
6	H	2.1	H	3.1	E	10.5	G	1,642	H	11.8	E	22.8
7	D	2.1	G	1.8	I	9.4	E	830	J	10.6	D	22.4
8	J	1.8	E	1.1	B	7.8	D	770	B	9.3	C	22.2
9	B	1.5	C	0.9	J	7.5	F	663	F	5.8	H	22.1
10	A	0.6	D	0.5	G	7.1	C	125	C	3.1	A	18.8
<b>Canada</b>		2.9		11.2		10.2		29,670		12.1		22.2

#### Definitions

Aboriginal: Aboriginal people living in a geographic area as a percentage of the total population

Visible minority: Population belonging to a visible minority group as a percentage of the total population.

Unemployment: Number of unemployed persons aged 15 or older divided by the total number of persons' aged 15 or older participating in the labour force.

1996 Population: Estimate of the total number of people living in the health region in 1996.

Population ≥ 65: Proportion of the population aged 65 or older.

Income inequality: Proportion of total household income in the less well-off 50% of households within a geographic area (that is, the .median share. of income). In a situation of complete inequality, the bottom half receives 0, and the top half 100%, of all income. With total equality, the bottom half of the income distribution receives 50% of the total income and the geographic area then has a median share value of 50%. In this range from 0 to 50%, higher median values indicate more equal income distributions

Rank	Migration mobility		Population < 15		Average dwelling		Population density		House affordability		Own dwelling	
	Peer	%	Peer	%	Peer	\$ '000	Peer	No./km2	Peer	%	Peer	%
1	J	24	C	35.8	A	236	A	2,936.60	A	35.7	D	79.3
2	F	22.8	F	25.7	B	206	B	331.4	B	27.3	E	76.8
3	G	20.5	G	23.1	J	179	I	93.8	I	25.1	G	76
4	I	18.4	J	22.3	I	136	H	84.5	J	25	J	74.3
5	B	18	B	21.4	F	111	J	83.7	H	24.4	I	69.3
6	C	16.1	E	21	G	99	D	7.3	D	19.7	F	69
7	E	15.9	I	20.4	H	97	G	5	E	18.4	B	67.4
8	H	15.8	H	19.8	C	89	E	5	F	18	H	64.9
9	A	11.9	D	19.2	E	76	C	3.9	G	17.7	A	43.2
10	D	9.1	A	16.7	D	60	F	0.5	C	13.5	C	38.2
<b>Canada</b>		16.8		20.2		152		167.7		26.2		64.4

#### Definitions

**Migration mobility:** Proportion of the population that lived in a different census subdivision (municipality) at the time of the previous census (1991). Canadians living in households outside Canada, such as military and government personnel, are excluded.

**Population < 15:** Proportion of the population younger than 15.

**Average dwelling:** Average expected value of an owner-occupied, non-farm, non-reserve dwelling, including land, at the time of the 1996 Census.

**Population density:** Number of persons per square kilometre

**House affordability:** Proportion of households spending more than 30% of their income on shelter.

**Own dwelling:** Proportion of dwellings in which the owner lives. Band housing and collective dwellings are excluded from both numerator and denominator.

Rank	Average school		Employment		LT unemployment		Government transfer		Male-Female ratio		Average income	
	Peer	No. years	Peer	%	Peer	%	Peer	%	Peer		Peer	\$ '000
1	A	13.9	G	82.3	D	6.9	D	29.8	C	1.08	B	29.1
2	B	13.9	J	82	C	5.7	E	21.6	F	1.08	J	29
3	J	13.5	B	81	A	5.1	C	18.6	G	1.02	F	27.2
4	I	13.1	I	78.2	H	3.8	H	16.3	J	1	A	25.8
5	H	12.8	E	76.8	I	2.9	I	15.1	E	1	I	24.7
6	G	12.6	F	76.7	B	2.5	G	14.9	D	0.99	H	23.3
7	F	12.5	H	74.5	J	2.4	A	13.7	B	0.99	G	23.1
8	E	12.3	A	72.9	F	2.3	J	10.8	H	0.98	C	20.1
9	D	11.5	C	65.1	E	2.2	F	10.4	I	0.98	E	20.1
10	C	10.6	D	55.4	G	1.6	B	9.5	A	0.94	D	18.2
Canada	13.2	76.6	3.4	14.4	0.98	25.2						

#### Definitions

**Average school:** Average number of years of schooling (elementary, secondary, university, and non-university) for the population aged 25 to 54.

**Employment:** Number of employed persons aged 25 to 54 divided by the total number of individuals aged 25 to 54.

**LT unemployment (long-term unemployment):** Proportion of the labour force aged 15 or older who did not have a job any time during the current or previous year.

**Government transfer:** Proportion of total income coming from federal programs such as Guaranteed Income Supplement/Old Age Security, Pension Plan, and Employment Insurance.

**Male, female ratio:** Total number of males in a given health region in 1996 divided by total number of females.

**Average income:** Average post-transfer, pre-tax personal income from all sources, for people aged 15 or older.

Rank	Low kids		Growth		Low income		Lone parent		MIZ		Recent immigration	
	Peer	%	Peer	%	Peer	%	Peer	%	Peer	%	Peer	%
1	A	37.7	B	4.4	A	30.4	C	20.4	A	100	A	52.6
2	D	28.4	J	4.3	D	22.4	A	18.8	B	100	B	45.9
3	E	22	F	4.1	H	20	H	14.9	J	89.4	H	38.4
4	C	22	C	4.1	B	18	D	14.9	I	85.9	C	37.8
5	H	21.9	A	2	E	17.5	I	13.8	H	80.8	D	31.1
6	B	21.2	I	1.9	C	17.2	F	13.7	F	59.6	F	28.5
7	I	19.7	G	1.7	I	16.2	B	13.4	G	38.9	I	27.7
8	G	16.8	H	0.6	G	13.8	J	12	D	32.9	J	25.1
9	F	15.2	E	0.3	F	12.7	E	11.8	E	25.8	G	24.4
10	J	13.9	D	-2.1	J	11.6	G	10.4	C	10.8	E	20.5
<b>Canada</b>		23.3		2.1		19.6		14.6		83.1		37.1

#### Definitions

**Low kids:** Proportion of children under age 18 living in economic families with 1995 incomes below Statistics Canada's low-income cut-offs. Data were not derived for economic families or unattached individuals in the Territories or on Indian Reserves.

**Growth:** Change in the population size between 1995 and 1997.

**Low-income:** Proportion of persons in economic families and unattached individuals with 1995 incomes below the Statistics Canada low-income cut-off (LICO). The cut-offs represent levels of income where people spend disproportionate amounts of money for food, shelter, and clothing. LICOs are based on family size and degree of urbanization; they are updated to account for changes in the consumer price index. Data were not derived for economic families or unattached individuals in the Territories or on Indian Reserves.

**Lone parents:** Proportion of lone-parent families, among all census families living in private households.

**MIZ (metropolitan influenced zone):** Population living in census metropolitan areas (CMAs), census agglomerations (CAs), and communities that fall outside CMAs/CAs in which at least 30% of the employed labour force commutes to the CMAs/CAs. The measure is used to describe the degree of urban influence in the health region. CMAs and CAs are large urban areas, together with adjacent urban and rural areas that have a high degree of economic and social integration with that urban area. CMAs and CAs are defined as urban areas that have attained certain population thresholds: 100,000 for CMAs and 10,000 for CAs.

**Recent immigration:** Proportion of individuals who came to Canada between 1981 and 1996 among total of immigrants.

Data source: 1996 Census of Population